

LEETON HIGH SCHOOL

Newsletter

P.O Box 843, LEETON 2705 Ph: 69532122 Fax: 69535085 leeton-h.school@det.nsw.edu.au ABN: 22 761 278 122

Principal: Mrs M Crelley

Issue No: 13 Term: 3

Monday 24th August, 2020

“Educating young people for active and responsible citizenship”

~~ PRINCIPAL’S REPORT~~

Year 12 Trial Higher School Certificate Examinations

Year 12 students conclude their HSC Trial Examinations on Wednesday 26th August. Study tips and additional support materials can be found at: <https://education.nsw.gov.au/teaching-and-learning/learning-from-home/hsc-central/hsc-student-hub/hsc/exam-tips>

If a student is unwell or unable to attend school to sit their Trial HSC exam then they must follow the illness/misadventure process. Information on this is contained in their Assessment Policy and Procedures booklet, also available from our school website.

Best wishes Year 12.

Year 9 Check-in assessment – Reading and Numeracy

Leeton High School has ‘opted in’ for students in Year 9 to undertake the Check-in assessment tests in Reading and Numeracy. Students will undertake the Check-in assessments in their English and Mathematics classes during the testing period.

The Check-in assessments supplement existing school practices to identify how students are performing in literacy and numeracy and to help teachers tailor their teaching more specifically to student needs.

The Check-in assessments are mapped to the NSW Syllabuses and National Literacy and Numeracy Learning Progressions.

The Check-in assessment includes two online assessments for students:

- reading assessment
- numeracy assessment

Please contact me with any questions regarding the Check-in assessments which will conclude this week for our students.

Year 11 Prefect nominations 2020/2021

Nominations have now closed for the 2020/2021 prefect leadership team. Nominations will be assessed and nominees will be informed of the outcome this week. Successful candidates will be invited to deliver a speech to the school. An induction ceremony will be held on Friday 11th September in keeping with current COVID restrictions, which unfortunately, at this stage, does not allow for parents/carers to be on-site. We will make this ceremony available to parents/carers online. More details to come. I would like to express my appreciation to all the students who have lodged a prefect nomination form. I am thoroughly impressed by the calibre of the students who have taken this opportunity to seek a leadership role, showing their interest and keenness to make a difference in our school. I look forward to working with the incoming leadership team.

Year 11 Yearly Examinations

Year 11 Yearly Examinations will commence the week beginning Monday 14th September. More information will be provided to students in the coming weeks. Study tips and additional support materials can be found at:

<https://education.nsw.gov.au/teaching-and-learning/learning-from-home/hsc-central/hsc-student-hub/hsc/exam-tips>

RESPECTFUL

RESPONSIBLE

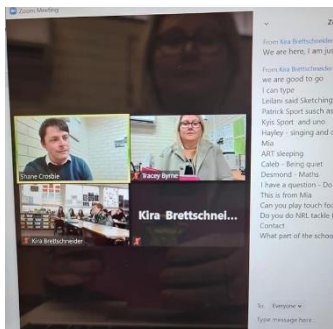
LEARNERS

Student Support Officer

We welcome Ms Jannette Dundon who will take on the role of Student Support Officer at Leeton High School commencing 24th August, 2020. The primary role of the Student Support Officer is to work within the school community to enhance student wellbeing and learning outcomes in partnership with the wellbeing team and the school counselling service. Student Support Officer provides individual and targeted wellbeing support and whole of school wellbeing initiatives and programs that are evidence-based. They have a pivotal role in working collaboratively with external agencies and creating referral pathways for students and families to child and family support agencies. Ms Dundon is available to students 5 days a week thanks to the NSW Department of Education's commitment to providing NSW high schools with a full time Student Support Officer.

Year 6 into 7 Transition Program

Our Year 6 into 7 Transition Program continues with Ms Byrne (Transition Co-ordinator) and Mr Crosbie (Year 7 Adviser 2021) visiting with our local primary schools via Zoom. While this certainly is not how we hoped our Transition Program would be delivered we are making the most of our opportunities to work with our newest students. Current COVID restrictions will not permit on-site school visits which will be revised in Term 4. If you require any information about our program, the transition to high school or about our school in general please do not hesitate to contact me on 0269532122. Please return enrolment forms to your child's primary school or drop them into our front office.



Hands on Learning

Our talented Hands on Learning crew have just about finished the signage for our Hands on Learning shed. This program has been a great success with some amazing projects being completed to enhance our school environment and to help community organisations who have received some of our creative projects. Congratulations goes to the students involved who have embraced the opportunity to try something different to enhance their learning and experiences at school. A huge thank you also goes to the staff that lead this innovative program – Mr Stuart Stout, Mr Pat Hubatka, Mr Gary MacAuley and Mr Brian Fullgrabe who do a great job by lending their talents to drive the many awesome projects undertaken by this crew.



Leeton High School Master Mask Makers

Thank you to Ms Hynard and her amazing team of mask makers who have given up their recess/lunch times to make face masks to be distributed by the Leeton Community Care Development at Gossamer Park last Saturday. Prime news visited the team to see what our students were doing. The generosity of this group of students is inspiring. Well done everyone! Thank you to the Leeton and District Aboriginal Lands Council for donating the materials to make the masks.



Positive Behaviour for Learning

Top effort by our respectful, responsible, learners this term. Students have been acknowledged for demonstrating our values earning 5654 positive PBL tickets from staff since the beginning of this term. Our Week 6 PBL draw will occur this Friday.



COVID-19 symptoms can include:

- fever
- sore throat
- cough
- shortness of breath.

If your child is sick, keep them at home and get them tested for COVID-19.

To keep, our community safe, students are required to produce a negative COVID test result and display no symptoms before returning to school. COVID test results need to be emailed to the school's email account (leeton-h.school@det.nsw.edu.au). In keeping with the updated school guidelines released recently, students displaying flu like symptoms will be sent home.

Leeton High School recognises and values the importance of communication between home and school. If you have any questions, please do not hesitate to call the school on 69532122. Stay in touch with the happenings at Leeton High School via the School Website <http://www.leeton-h.schools.nsw.edu.au/> or our Facebook page - <https://www.facebook.com/LeetonHS>.



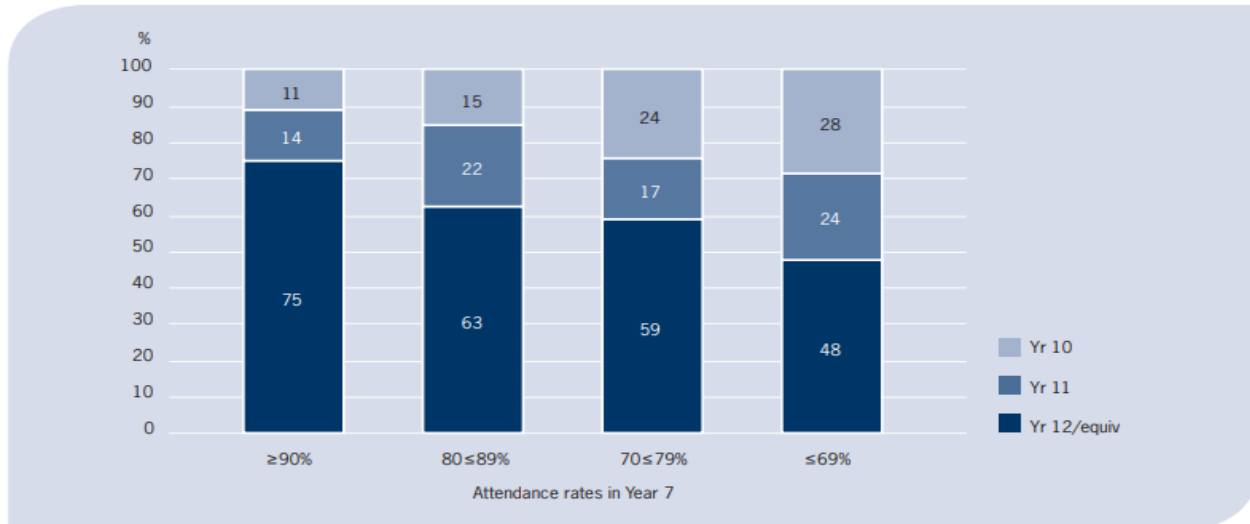
Mrs Meagan Crelley
Principal

~~DEPUTY PRINCIPAL - TEACHING & LEARNING~~

IMPORTANCE OF REGULAR ATTENDANCE

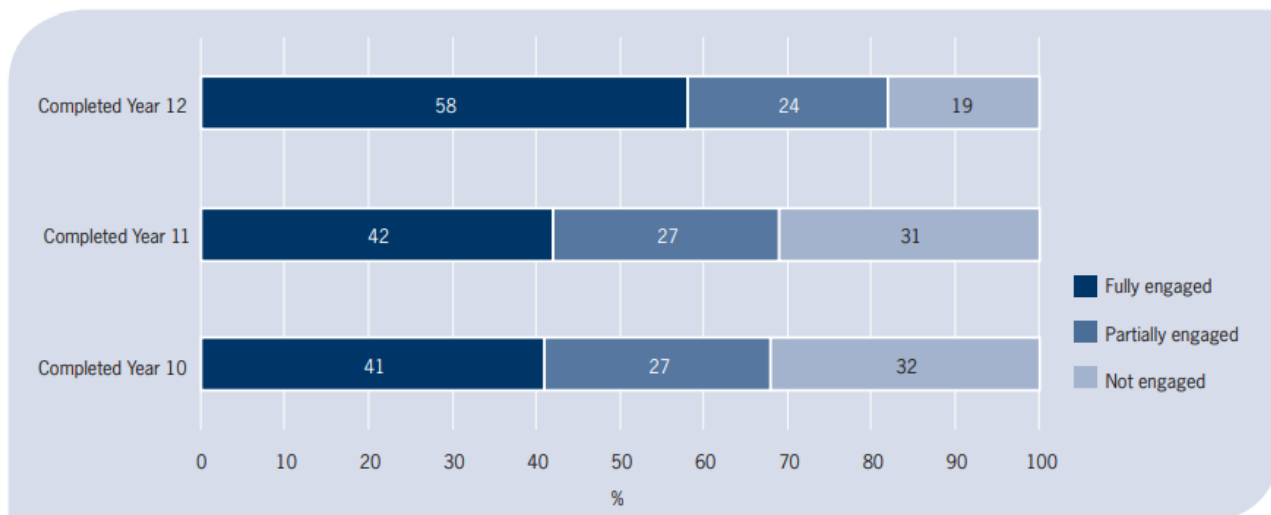
Regular attendance at school is essential to assist our students to maximise their potential. Our School in partnership with parents, are responsible for promoting the regular attendance of students. Previously, I have touched on data which shows that students with attendance rates of 90 percent or above when they were in Year 7, were much more likely to complete Year 12 or equivalent, than students who had poorer attendance in Year 7 (Smith Family 2016).

Figure 6: Highest year level completed 2014-2016 by attendance rates in Year 7



As shown in the figure below, students who completed Year 12 are much more likely to be engaged in paid work or further study than early school leavers. Eighty two percent of students who completed Year 12 were engaged in work and/or study, compared to only 68 percent of those who only completed Year 10 (Smith Family 2016).

Figure 8: Post-school engagement rates in work and/or study by highest year level completed, 2017



In Section 22 of the Education Act (1990) it is a requirement of parents to explain the absences of their children from school promptly and within seven days to the school. An explanation for absence must be provided to the school within 7 days of the first day of any period of absence. To fulfill these legal requirements of the Education Act, we will continue to send text messages to all parents whose child has been marked absent for the full day. These messages will usually be sent sometime between 10.00am and 11.00am in the morning. We kindly request that if you receive a message of this kind, could you please respond directly to the message or by phoning the school, to explain the reason for your child be absent from school that day.

If over a period of a fortnight, your child has an unexplained attendance rate of below either 85% or 70%, another message and a letter will be sent from the school requesting further information on the reasons for your child's absence. If the school does not

receive an adequate response to this correspondence, home school or Aboriginal student liaison officers may be engaged to work with students and their families to develop and implement strategies to support those with identified attendance issues.

School can be considered as your child's first and most important job. Whilst at school, they are learning about more than just subjects at school, they are also learning about how to show up for school on time every day, so that when they leave school and go into their chosen career, they will know how to show up on time every day.

TELL THEM FROM ME PARENT SURVEY:

At the end of this Term along with the start of next Term, Leeton High School will be participating in the *Partners in Learning* parent survey, another part of the *Tell Them From Me* suite of surveys (student, teacher and parent surveys) on student engagement. The survey asks parents and carers questions about different factors that are known to impact on student wellbeing and engagement.

Running this survey will help our school understand parents' and carers' perspectives on their child's experience at school. These include: communication between parents/carers and staff, activities and practices at home and parent/carer views on the school's support of learning and behaviour. This valuable feedback will help our school make practical improvements.

The survey is conducted entirely online on smartphones, iPads, tablets, laptops or computers. The survey will typically take 15 minutes or less to complete and is completely confidential. The parent survey will be conducted between 31st August and 23rd October. Although participating in the survey is entirely voluntary, your responses are very much appreciated.

Our school will provide further information about how to access the survey. In the meantime, more information about the survey is available at: <http://surveys.cese.nsw.gov.au/>

Glenn Duggan
Deputy Principal, Teaching & Learning



national SCIENCE WEEK

LHS celebrated Science Week throughout Week 5 with a variety of activities including;

Monday 17/8

**LED Cards
with simple
circuits**

Tuesday 18/6

**Cube
Bubbles**

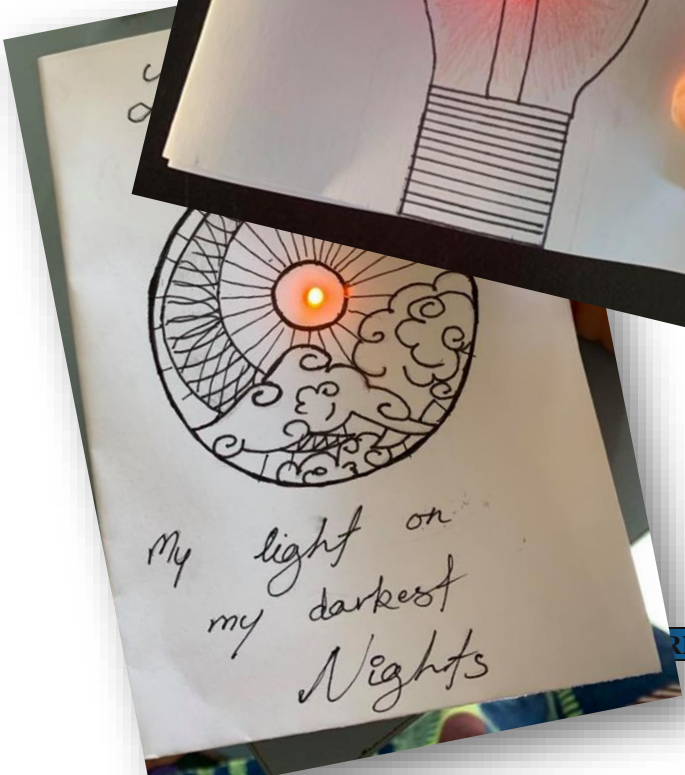
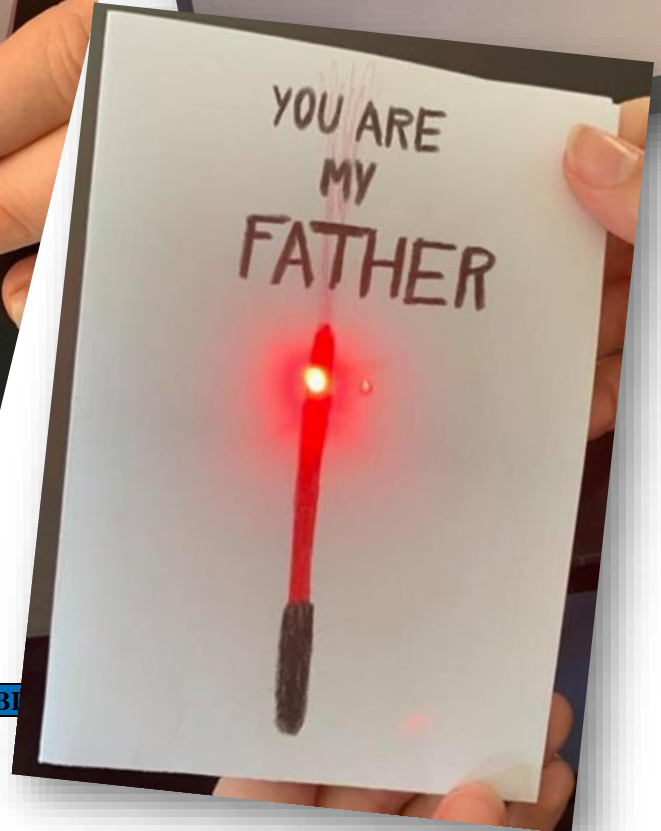
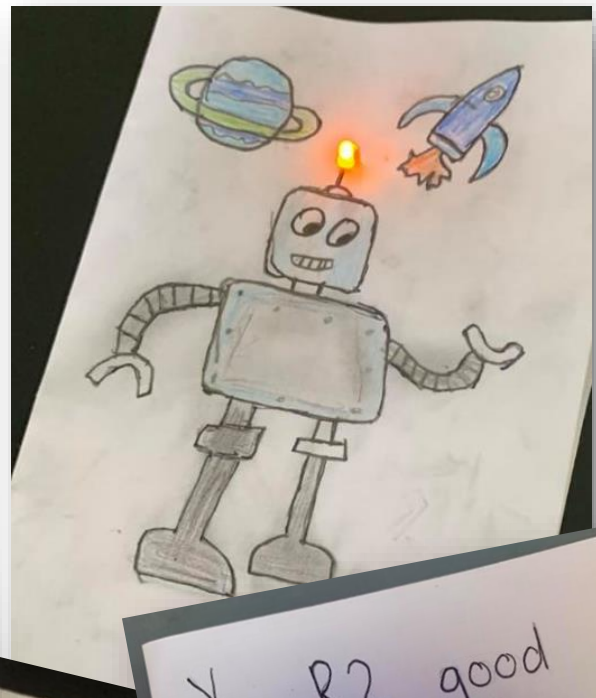
Thursday 20/8

**Watermelon
Smash**

Friday 21/8

**Spaghetti
Trigonometry**

LED Card Making was a hit. Students constructed a simple circuit using copper tape and 3V batteries to make a card with an LED light embedded in it. There was too much excitement on the day and we forgot to take photos, however, here are some samples from Mrs Doig's Year 9 Class.



Student's (and the Science Staff) constructed elaborate apparatus to blow cube shaped bubbles. Unfortunately we need to run some more tests in the future to perfect the technique.



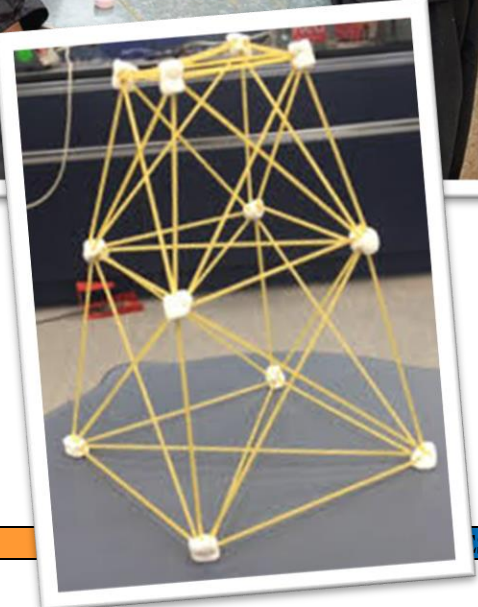
Watermelon Implosion

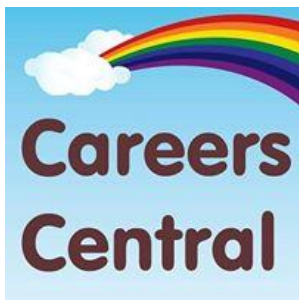
Students' learnt about forces while designing this experiment to test how the size and rind thickness of a watermelon affected the number of elastic bands it would take to implode a watermelon. Student's controlled a number of variables so that we could contribute our results to **Experimentary** with 250+ other schools. We are looking forward to analysing the data!



Our three watermelons imploded after adding between 165 and 210 elastic bands!

Spaghetti Trigonometry involved teams of students trying to build the tallest tower out of a certain number of marshmallows and spaghetti. This activity incorporated the principles of trigonometry to ensure that strong towers were built. Our highest tower measured 85cm.





Leeton High School Careers



With Mrs Goring & Mrs Palmer

UPCOMING EVENTS:

University Early Entry Programs 2020

Charles Sturt Advantage: Open Now and close 31 AUGUST 2020

Courses

White Card – 23rd September 2020

Expression of Interest are now being taken. Limited spots. Closes 16th September 2020. Cost \$100. Notes go out shortly .

First Aid – Term 4 – Date TBC

Please let us know if you are interest as we need numbers to hold the course.

Work Experience

Expression of Interest are now being taken for any Y11 and Y10 students interested in work experience in Term 4. You must have your name down by 31st August 2020 as we have a Work Ready Day Program students must attend.

For any of these courses please come and see Mrs Goring or Mrs Palmer as soon as possible.

WIN Program

This week we were able to meet up with some of our students in their place of employment. Each employer gave praise to the students for their attitude and enthusiasm. Well done. We are looking forward to further visits over the upcoming weeks.

WIN students please ensure you return your work journals each week to Mrs Palmer for signing off. Enjoy your next few weeks of work experience.

RoryDay-Oliver at Leeton Toyota



Eh Htoo at Leeton Tourist Information Centre

EMPLOYMENT OPPORTUNITIES

Pat Cirillo Air Conditioning in Griffith is looking for an **Air Conditioning Apprentice**. Interested students need to be reliable, punctual very eager to learn as well as good communication skills.

Students will be required to attend TAFE in Griffith.

If you are interested, email a Resume to Pat at admin@cirilloair.com.au or call

Mobile: 0429 625 267

Apprentice Welder Griffith (2 positions)

Apprentice Fitter and Turner Griffith

Apprentice Fitter and Turner Leeton

For more information call Frank Valenzizi at GetSet Leeton on 69538727 or go to their website

www.getset.org.au

**GRAINCORP HARVEST
APPLICATIONS NOW OPEN FOR
HARVEST COMMENCEMENT
OCTOBER 2020
GO TO www.graincorp.com.au
TO APPLY**



RESPECTFUL

RESPONSIBLE

LEARNERS

SCHOOL AWARDS

Congratulations to the following students on achieving awards:

BRONZE AWARD: Ruby Miller, Diana Wormleaton (Year 7), Charlize Simcoe, Neve Richardson, Farhad Hussaini (Year 8) and Adele Thompson (Year 9).

SILVER AWARD: Adele Thompson (Year 9).

PLATINUM AWARD: Madeline Irvin (Year 9).

EXECUTIVE AWARD: Scarlett Wallace (Year 7), Tamika Rourke (Year 8), Rhea Fairweather, Jessica Eldridge (Year 11), Hannah Pianca (Year 12).

PAYMENTS TO SCHOOL

The school is now accepting cash payments but eftpos or POP would be the preferred payments if possible.

Eftpos is available at the front office or POP payments can be made through our school website (leeton-h.schools.nsw.gov.au then go to the "Make a Payment" tab at the top of the page)

REFUNDS FOR YEAR 7 & 9 **EXCURSION**

Students were provided with refund forms for these activities last term. If you have not received this form please contact the School. These forms need to be returned to the Front Office by the end of Term 3 (25th September) so the refunds can be processed. Thank you

DATES TO REMEMBER

Mon 24th –Wed 26th Aug – Trial HSC Exams

Mon 14th Sept – Year 11 Prelim Exams

RESPECTFUL

RESPONSIBLE

LEARNERS



Tell Them From Me parent survey Frequently Asked Questions (parents and carers)

Centre for Education Statistics and Evaluation

1. What is the Partners in Learning parent survey?

The Partners in Learning parent survey is part of the *Tell Them From Me* suite of surveys on student engagement. The parent survey helps to clarify and strengthen the important relationship between parent and school.

The survey is designed to measure, assess and report insights from the parent point of view at the school and system levels. The focus of this NSW survey is on student wellbeing, engagement and effective teaching practices.

2. What kind of questions will the survey ask?

The survey questions aim to understand parents' perspectives on their child's experience at school, including teaching, communication and the school's support of learning and behaviour. The survey also aims to understand parents' perspectives on activities and practices at home related to their child's learning.

The survey will ask parents questions about:

Parents feel welcome	Parents are informed	Parents support learning at home
School supports positive behaviour	Safety	Inclusion
Communication preferences	Parents' participation at school	School supports learning

3. How have schools been selected to take part?

The survey is open to all NSW government schools at no cost to them. Your school has decided to participate.

4. How will taking part in this survey benefit my child's school?

The parent survey provides school principals and school leaders with parents' perspectives on their school as well as learning at home. Communication between parents and staff, activities and practices at home, and parent views on the school's support of learning and behaviour help build an accurate and timely picture that schools can use for practical improvements.

Data collected from the survey responses are quickly compiled into reports for school leaders. Principals can then use this information to help them identify emerging issues and plan for school improvement.

5. How does the parent survey relate to the student survey?

The parent survey is complementary to the *Tell Them From Me* student survey that your child may have been asked to complete. These surveys are offered (along with a teacher survey) to ensure schools can capture the views of students, teachers and parents.

For more detail on each of the surveys, see the survey website: <http://surveys.cese.nsw.gov.au/>

6. What do I need to do to participate in the survey?

The survey typically takes 15 minutes and is conducted entirely online through a secure website operated by the survey developers, *The Learning Bar*. You can complete the surveys on desktop computers, laptops, ipads, tablets and smartphones. You will be provided with a link to complete the survey at home or your school may make computers available so that you can complete the survey during school hours. This link will be distributed to you by your school during Term 3.

7. Do I need to participate?

No, participation in the survey is optional. Whilst your responses are very much appreciated, if during the survey, you feel uncomfortable, you can stop the survey at any time. The majority of questions in the survey can be skipped.

8. Will the school be able to identify me or my child from my responses?

Survey responses are anonymous so staff in schools will not be able to identify individual parents or students from parent responses. Data suppression rules are applied to the school reporting tools where there are fewer than five responses. In other words, schools only see responses to questions which have been answered by five or more parents.

9. What sort of analysis will be done of the survey data?

Once the surveys are completed, reports are prepared and in most cases are available to schools within three business days. School leaders can use the data to better understand the experiences and views of parents at their school.

CESE will undertake state-wide analysis of the survey data in conjunction with existing student data held by the department, including performance data. The results will help all schools better understand the relationship between

parents and students' engagement, students' wellbeing, effective teaching and student learning. Results from CESE's analysis of this data will also help teachers and principals discuss what works to improve student outcomes. This supports the department's continuing focus on quality teaching and leadership. The data will be retained for future analysis to help us better understand the nature of student engagement and wellbeing over time.

10. When will the Partners in Learning survey happen?

The surveys will be conducted in all participating schools between Monday 27th August (Week 6, Term 3) and Friday 26th October 2018 (Week 2, Term 4).

What is CESE?

The Centre for Education Statistics and Evaluation (CESE) is part of the Department of Education.

CESE has been established to improve the effectiveness, efficiency and accountability of education in New South Wales.

CESE will identify and share what works, creating new opportunities to improve teaching and learning across all of education.

More information about CESE is available at: www.cese.nsw.gov.au

What is *The Learning Bar*?

The Learning Bar is a Canadian education company that specialises in school surveys for both primary and secondary students.

Its survey, *Tell Them From Me*, is the largest national school survey in Canada, used in nine of Canada's ten provinces. More than 6,300 schools and 5.4 million students have participated in the survey. Australian schools have been participating in the *Tell Them From Me* surveys since 2012.

The Learning Bar is led by Dr J Douglas Willms. Dr Willms is the President of the International Academy of Education, a Member of the US National Academy of Education and a Fellow of the Royal Society of Canada. He recently held the Tier 1 Canada Research Chair in Literacy and Human Development for 14 years. Dr Willms has played a lead role in the development of questions for the OECD's Programme for International Student Assessment (PISA).

More information about *The Learning Bar* is available at: www.thelearningbar.com

If you have any questions about the parent survey, please contact CESE via email: TTFM@det.nsw.edu.au or by telephone: **1300 131 499**.



**CHANGE OF DATE
U14 BOYS ONLY**



Leeton Touch Footy Rep Trials

SATURDAY 29 AUGUST

U14 BOYS - 10AM-11AM

(BORN 2007 OR AFTER)

SUNDAY 30 AUGUST

U10 GIRLS - 10AM

(BORN 2011 OR AFTER)

U8 BOYS - 11.15AM

(BORN 2013 OR AFTER)

LEETON TOWN OVALS

CHECK US OUT ON FACEBOOK
OR INSTA FOR MORE INFO

COACH + MANAGER EXPRESSION OF INTEREST
DM US ON FACEBOOK OR INSTA
OR EMAIL LEETON_TOUCH@HOTMAIL.COM

