



P.O Box 843, LEETON 2705

Ph: 69532122

Fax: 69535085

leeton-h.school@det.nsw.edu.au

ABN: 18 246 198 266

Principal: Mrs M Crelley

Issue No: 2

Term: 1

Monday 20<sup>th</sup> February 2023

*"Educating young people for active and responsible citizenship"*

## ~~PRINCIPAL'S REPORT~~

We have had a fantastic fortnight since our last newsletter and much to celebrate.

I would like to commend our students who attended our recent swimming carnival. Behaviour and participation were outstanding, and it was especially inspiring to see so many students cheering on and supporting our less confident swimmers. Our 2023 House Captains were inducted during the morning session at the pool and were all exemplary leaders throughout the carnival.

Congratulations to the following House leaders and to our Age Champions on an exceptional carnival:

### **David**

House Captains: Raj Sahota & Heidi Whyatt

Vice Captains: Bailey Bennett & Adelaide Heins

### **Hunter**

House Captains: George Kokke & Libby Olrick

Vice Captains: Blake Eisenhut & Tamika Rourke

### **Mawson**

House Captains: Chase Lee & Victoria Glenn

Vice Captains: Jesse Watson & Danica Riznic

### **Smith**

House Captains: Brayden Fejsa-Sexton & Eloise Crelley

Vice Captains: Kyson Freer & Emma Sherlock

## **Age Champions 2023**

### **Girls**

12 Ella Broadbent

13 Abbey Holden

14 Ellena Halloran

15 Madeleine Glenn

16 Sari Leighton

17 Madeline Irvin

### **Boys**

12 Kobe Jeffries

13 Mason Bennett

14 Isaac Creek

15 Kian Henman

16 Kyson Freer

17 Raith Henman

Thank you to all the parents and grandparents who came to watch. It was great to see you there.



Congratulations to Blake Ryan (Year 12) and Tallis McMillan (Year 10) for their recent selection in the Riverina Opens Basketball Team – a huge feat given the strength of the competition across the Riverina. We look forward to hearing about the team's competition successes and wish the boys well for the next steps.



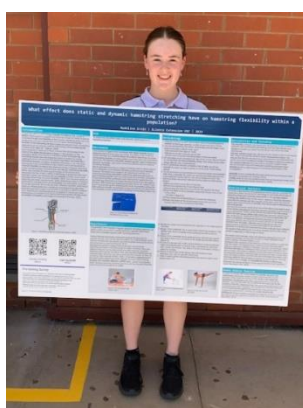
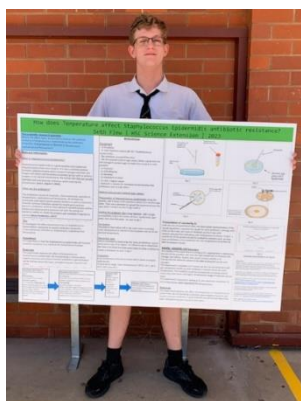
Commendations to those students who have been selected for our Representative Dance Ensemble. The group will benefit from the experience and vision of our senior dancers – Emily Pearce, Matilda Ryan, Molly Gilmour, Dakota Boardman, Madeline Irvin and Adele Thompson. It is wonderful to see so many Year 12 students make the most of the opportunities at our school despite the busy year before them. We look forward to seeing this great ensemble in action.

Student Representative Council (SRC) nominations were received last week in record numbers. The huge interest in school leadership is a great endorsement of the hard work and positive contributions from our 2022 SRC cohort and the wonderful students we have at Leeton High School. Miss Rowett, our Student Leader Mentor, will be in contact with our nominees to confirm the process and we look forward to the upcoming Induction Assembly to celebrate our young leaders. More information will be communicated to those involved shortly.

Thank you to all families who attended the Year 12 Jacket Presentation on 9<sup>th</sup> February. It was a special occasion to celebrate our most senior students and to wish them well for a purposeful year. It was great to be able to acknowledge this milestone with all families. Year 10 also received their jerseys last week and have been wearing them proudly. A second jersey order for Year 10 students has been placed and will arrive shortly.



Congratulations to our Year 12 Science Extension students, Madeline Irvin and Seth Flew on successfully presenting their project proposal posters last Wednesday. We are looking forward to seeing the results of their research projects on hamstring flexibility and the effect of temperature on bacterial resistance to antibiotics.



Our LHS Learning Links program commenced last week. This program supports our boys and girls to build strong relationships with our community and to give back to others. Students also learn teamwork, respectful relationships, and social skill building as key themes.

Community awareness is also a topic the group focused on last week with the assistance of the Leeton Shire Council Museum staff and a tour through the Museum. Thanks to all for hosting our students. They thoroughly enjoyed the experience.







**SAVE THE DATE!!!! Leeton High School EXPO**  
**5-7pm 14<sup>th</sup> March**

We are holding an EXPO for our community on Tuesday 14<sup>th</sup> March to showcase our school, our different faculties and the subjects they deliver and the great programs we run to support all our students learning and wellbeing. We look forward to welcoming our current and prospective school families and sharing more about Leeton High School. More information to come!

### **NAPLAN 2023 for students in Years 7 and 9**

**This year the NAPLAN test window starts on Wednesday 15 March and finishes on Monday 27 March 2023.**

#### **Why do students do NAPLAN?**

NAPLAN is a national literacy and numeracy assessment that students in Years 3, 5, 7 and 9 sit each year. It is the only national assessment all Australian students have the opportunity to undertake. As students' progress through their school years, it's important to check how well they are learning the essential skills of reading, writing and numeracy.

NAPLAN assesses the literacy and numeracy skills that students are learning through the school curriculum and allows parents/carers to see how their child is progressing against national standards and over time.

NAPLAN is just one aspect of a school's assessment and reporting process. It doesn't replace ongoing assessments made by teachers about student performance, but it can provide teachers with additional information about students' educational progress.

NAPLAN also provides schools, education authorities and governments with information about how education programs are working and whether young Australians are achieving important educational outcomes in literacy and numeracy.

#### **Your child will do the NAPLAN tests online**

Schools have transitioned from paper-based to computer-based assessments. All Year 3 students will continue to complete the writing assessment on paper.

Online NAPLAN tests provide more precise results and are more engaging for students. One of the main benefits is tailored (or adaptive) testing, where the test presents questions which may be more or less difficult depending on a student's responses.

Tailored testing allows a wider range of student abilities to be assessed and measures student achievement more precisely. A student's overall NAPLAN result is based on both the number and complexity of questions they answer correctly. Your child should not be concerned if they find questions challenging; they may be taking a more complex test pathway.

#### **What does NAPLAN assess?**

NAPLAN assesses literacy and numeracy skills that students are learning through their regular school curriculum.

Students sit assessments in writing, reading, conventions of language (spelling, grammar and punctuation) and numeracy. The questions assess content linked to the Australian Curriculum: English and Mathematics.



## Positive Behaviour for Learning (PBL) at Leeton High School

Our school has been an adopter of Positive Behaviour for Learning (PBL) since 2019. PBL is an evidence-based framework that assists schools to improve social, emotional, behavioural and academic outcomes for young people.

The PBL framework supports a teaching and learning environment that allows teachers and students to have more time to focus on relationships and classroom instruction. Students and staff benefit from:

- reduced inappropriate behaviour
- increased time focused on instruction
- improved social-emotional wellbeing
- positive and respectful relationships among students and staff
- support for teachers to teach, model and respond effectively to student need
- a predictable learning environment where staff and students know what is expected to deliver effective practices that can be sustained over time

LEETON HIGH SCHOOL		
RESPECTFUL	RESPONSIBLE	LEARNERS
<ul style="list-style-type: none"><li>▪ Follow teacher instructions</li><li>▪ Respect others, self and property</li><li>▪ Speak politely</li></ul>	<ul style="list-style-type: none"><li>▪ Wear your uniform with pride</li><li>▪ Right place, right time</li><li>▪ Learn and play safe</li><li>▪ Keep your area clean</li></ul>	<ul style="list-style-type: none"><li>▪ Be ready to learn</li><li>▪ Actively participate</li><li>▪ Aim high</li><li>▪ Be determined and resilient</li></ul>

As part of this PBL structure, our school focusses on our three core values and expectations – being a respectful, responsible learner. To ensure our students remain aware of these expectations and to support the overall intentions of the PBL framework, we deliver a 30-minute PBL session every Friday which gives students the opportunity to further explore our values appropriate to their stage of schooling. Additionally, to maintain the focus on promoting positive behaviours teachers acknowledge, through our electronic PBL ticket system, our students when they demonstrate our values.

As of the end of the school day on Friday 17<sup>th</sup> February our students have been recognised 3134 times with positive PBL entries which is a fantastic start to the year and a credit to our students and staff. We will run our first PBL Prize Draw at our Week 6 assembly.

### Homework Centre

Our Homework Centre commences this term from 3.30pm-4.30pm on Tuesday and Wednesday afternoons in our Library starting this week. Staff are ready to assist students with their class work or assessments so please make use of this helpful initiative. Students are required to organise their own way home at the conclusion of the Homework Centre sessions.

### Breakfast Club

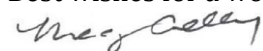
Our Breakfast Club is operational from Monday to Friday thanks to our volunteer teachers and students, the Golden Apple, and Foodbank. All students are encouraged to grab some toast or cereal to fuel a productive day of learning.

### Leeton High School Canteen – The Hungry Hut

Just a reminder – with the introduction of YONDR pouches students will not be able to access PayWave on their mobile phones. Our canteen has an online ordering facility which can be accessed here <https://leeton-h.schools.nsw.gov.au/about-our-school/what-we-offer/canteen.html> or alternately students can bring their key card (not kept with their phones) or cash to school for purchasing at the canteen.

Leeton High School values the importance of communication between home and school. If you have any questions, please do not hesitate to call the school on 69532122. Stay in touch with events and information via our Facebook page <https://www.facebook.com/LeetonHS> and the school website <http://www.leeton-h.schools.nsw.edu.au/>

Best wishes for a wonderful year!



**Mrs Meagan Crelley**  
Principal

# NAPLAN

## National Assessment Program - Literacy and Numeracy Information for parents and carers

- All students in Years 3, 5, 7 and 9 in Australia do NAPLAN tests in March each year.
- NAPLAN tests students' skills in reading, writing and maths.
- The test questions are presented in Standard Australian English dialect.
- Students read some of the questions and listen to others with headphones.
- The tests will get easier or harder, depending on how students are going in the test.
- Students do four different tests. The names of the four tests are:



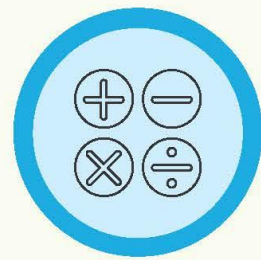
**Writing**



**Reading**



**Conventions of language**  
(spelling, grammar and punctuation)



**Numeracy**

- Students in Year 3 will do the Writing test using pencil and paper. Year 3 students will answer the other test questions on the computer.
- Students in Years 5, 7 and 9 will answer all their test questions on computers.
- Teachers will help students get ready for NAPLAN tests.
- Schools will get their students' results. The school will then give parents/carers a report showing their own child's results.
- Parents/carers can talk to the teacher about these results.
- NAPLAN shows how students are going all over Australia. People who work in the Australian Government, state and territory education authorities and schools use NAPLAN results. The results let them see which schools are doing well and which schools might need help.

**Talk to your teacher if you have any questions about your child doing the tests.**  
For more information on NAPLAN, visit [nap.edu.au](http://nap.edu.au).



# School Community Charter

 **Collaborative. Respectful. Communication.**

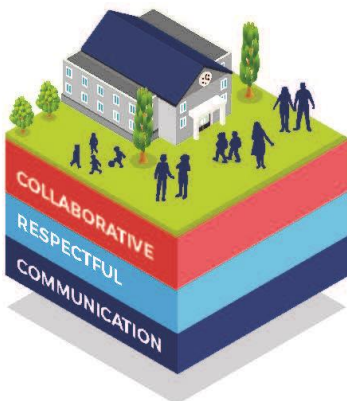
The following School Community Charter outlines the responsibilities of parents, carers, educators and school staff in NSW public schools to ensure our learning environments are collaborative, supportive and cohesive.

## What our schools provide

NSW public schools work to create positive environments for students, staff and the entire school community that support student learning. We strive to ensure that every student is known, valued and cared for.

**The best education happens when parents and schools work together.**

The School Community Charter aligns with the NSW Department of Education Strategic Plan 2018 – 2022.



## Positive environments

It is important that our NSW public schools are positive environments and that parents and carers are kept informed of students' progress and school announcements.

Parents and carers can expect:

- To be welcomed into our schools to work in partnership to promote student learning.
- Communication from school staff will be timely, polite and informative.
- Professional relationships with school staff are based on transparency, honesty and mutual respect.
- To be treated fairly. Tolerance and understanding are promoted as we respect diversity.

We treat each other with **respect**

We **prioritise** the wellbeing of all students and staff

**Unsafe behaviour** is not acceptable in our schools

We work **together** with the school

**Ensuring respectful learning environments for all members of NSW Public Schools communities.**





We create  
**collaborative**  
learning  
environments

We  
all play  
**our part**

We work  
**in partnership**  
to promote  
student  
learning

## Communicating with our schools

Our staff will find a time to talk to you when they can give you their full attention. Please remember that while our staff are in class or dealing with other matters, they may not be available to answer your questions immediately.

Our schools and communities will make sure that written communication is appropriate, fair and easy to read. We encourage you to use email and social media appropriately to connect with your school and stay up-to-date with up-coming events in the school community.

Our guide for parents, carers and students provides useful information about the complaints process:

[education.nsw.gov.au/about-us/rights-and-accountability/complaints-compliments-and-suggestions/guide-for-parents-carers-and-students](https://education.nsw.gov.au/about-us/rights-and-accountability/complaints-compliments-and-suggestions/guide-for-parents-carers-and-students)

## Respectful communication is a right

In all workplaces people have the right to feel respected. Unacceptable and offensive behaviour has no place in our school communities.

To ensure the wellbeing of students, staff and the community in our schools, steps will be taken to address unacceptable behaviour. This may include restricting contact with the school community or, in more serious cases, referral to NSW Police.



### Unacceptable behaviour may include but is not limited to:

- Aggressive or intimidating actions, such as violence, threatening gestures or physical proximity.
- Aggressive or intimidating language, including the use of obscenities, making sexist, racist or derogatory comments or using a rude tone.
- Treating members of the school community differently due to aspects such as their religion or disability.
- Inappropriate and time wasting communication.



**Collaborative.  
Respectful.  
Communication.**

**School Community Charter**

[education.nsw.gov.au](https://education.nsw.gov.au)

**~~DEPUTY PRINCIPAL'S REPORT- WELFARE~~**

As a new member to the Executive Team for 2023, I have found the school community to be most welcoming and supportive. I am enjoying getting to know the students, working with staff and building supportive relationships with parent / carers in my role as Deputy Principal.

Please feel free to contact either of the Deputies, through the school office, if you have any concerns or questions about your son / daughter that we may be able to help you with.

**Attendance Matters, Everyday Counts!** – Regular school attendance has a dramatic impact on academic achievement as well as social and emotional wellbeing for students. When students attend school every day, learning becomes easier, they are more engaged, progress with their learning and they are able to build and maintain friendships with their peers.

At Leeton High we expect students to be punctual each day and attend school regularly. School attendance is carefully monitored as it forms part of our legal obligation. Leeton High School is part of the “Attendance Pilot Program”, striving to boost overall school attendance to improve learning, academic performance and wellbeing outcomes for our students.

If your child is away from school, you will receive an SMS notification. We ask that parents provide an explanation for absences to the school within 7 days from the first day of any absence period. This can be completed by phoning the school, using the Sentral Attendance App or via email at [leeton-h.school@det.nsw.edu.au](mailto:leeton.h.school@det.nsw.edu.au) If your child requires extended leave, they will need to seek Principal approval.



**Respectful, Responsible, Learners** – Our staff strive to continually deliver quality learning to our students. In return we expect students to be ready to learn as they enter the classroom. They must be on time to class with writing materials and books organised, ready to focus on their teacher and the instructions given. Students need to be actively engaged in their learning to demonstrate subject specific learning outcomes and to achieve learning gains. Learning is a dynamic and it needs to be continually practiced.

**Student Diary Use** – All students have been issued with a school diary, I would ask parents to make themselves familiar with the policy pages in the diary about Behaviour expectations, Computer / School Laptop and Internet Use, Uniform code, Attendance and Merit Certificates and the Level System. Students are encouraged to use the diary to record homework and plan for assessment tasks. Parents can refer to the diary as a regular check-in tool to assist their child to meet academic due dates.

**Student and Parent Portal** - The student and parent portal is a website where student and parents can gain access to see important school information such as reports, timetables and student attendance data. Parent keys were sent last week to the new families who have joined our school community this year. If you have not received this email, contact the school to confirm that the correct email is listed. Students can access the student portal using their DoE username and password. Tutorials are also available on the [New Sentral for Parents App](#).

**Bus Parking Area** – A reminder to parents dropping off and picking up students, the Bus Parking Bay is NOT to be used.

Alison Dahlenburg-Deputy Principal - Welfare





Leeton High School Careers

With Mrs Goring & Mrs Palmer

## **White Card Course – Thursday 30<sup>th</sup> March**

Expression of Interest is now being called for those interested in obtaining a White Card. Names required by 28<sup>th</sup> February.

A white card (or general construction induction card) is required for workers who want to carry out construction work, trade workers eg electrician, plumbers, building industry.

Students interested will need to put their names on the sheet provided outside the Careers Room.

**Year 10** - will all be participating in work experience next term. If interested in the construction industry students will require this card.

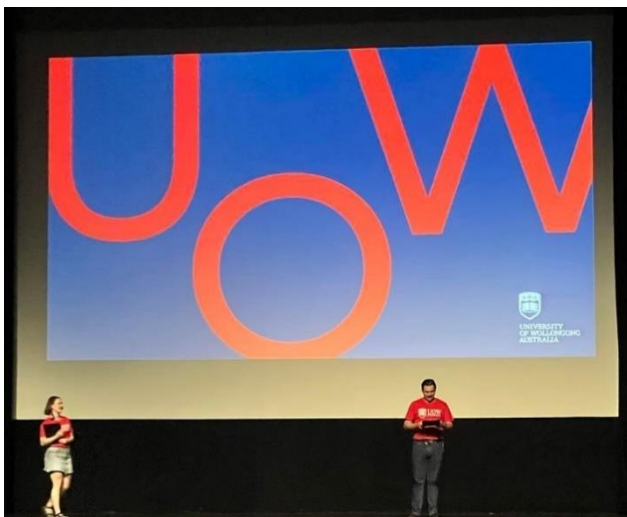
Limited spots available. Cost to be confirmed.

## **University of Wollongong Discovery Day 2023**

A group of Year 12 students visited the Uni of Wollongong last week. Due to Covid-19 restricting visits to UOW in the last 2 years, it was great to return to get the full UOW experience.

Students were welcomed in the Uni-hall with a presentation from a doctor of neurodivergence/artist. After her inspirational talk, students were split up and went to their various mock lectures and tour of the university.

Students arrived home Friday evening even more motivated to pursue their goals of tertiary education, particularly at the beautiful UOW, who did a magnificent job in hosting the students.



## **UCAT 2023**

**If you're in Year 12 and want to apply for a medical, dental, or clinical science degree, you may need to sit the UCAT.**

[List of universities and courses that require the UCAT.](#)

The UCAT is a 2-hour computer test that helps universities to select applicants with the most appropriate abilities and professional behaviours required for new doctors and dentists to be successful in their clinical careers. It is used in collaboration with other admissions processes such as interviews and academic qualifications.

We encourage you to begin preparing as soon as possible. There are a range of [preparation resources](#) available to help you.

[Key Dates](#) - all deadlines are 11:59 pm AEST

1st March: bookings open

17th May: bookings close

3rd July: first tests date

12th August: last test date

## **Careers Calendar 2023**

2 Feb-17 Mar	TAFE Yes Automotive Program
1 Mar	Charles Sturt University Visit to LHS
30 Mar	White Card Course
29 May-9 Jun	Year 10 Work Experience
14 June	Careers Expo at Leeton High School
Term 4	WIN Work Experience Program

## **Job Opportunities**

Woolworths Leeton are looking to employ more junior workers. To apply, go to Woolworths Careers (<https://www.wowcareers.com.au/>), register your interest, and submit your resume to the front counter at Woolworths along with your application number.

## SCHOOL AWARDS

Congratulations to the following students on achieving awards:

**EXECUTIVE AWARDS:** Iowani (Junior) Korovata, Hunter Bull, Victoria Sakaria (Year 7), Isabel Thompson, Emily Well, Ezekiel Rosenberg (Year 8), Kyis Ruttley, Kenji Rayos, Asher Cloete (Year 9), Daneeka Fejsa-Sexton, Grace Hill (Year 10), Eloise Crelley, Kyson Freer (Year 11), Shallan Stockton and Matilda Ryan (Year 12)

## Year 7 Camp

Year 7 have made a fantastic start to the year.  
If your child is attending the Year 7 Camp and you have paid their deposit, this is a reminder that the final payment is due on the 8<sup>th</sup> March 2023.

### DATES TO REMEMBER

Tue 21 Feb – RYDA – Yr 11 Students

Wed 22 Feb – South West Swimming Carnival

Wed 8 March – Final Payment for Camp

Wed 8 & 15 March – Sheldrick Shield

Wed 13-Mon 27 March - NAPLAN

Tue 14 March – LHS EXPO 5pm-7pm

Wed 22 March – Year 7 Camp

Wed 5 (1/2 day) & Thur 6 April – LHS Athletics Carnival





**TRIAL SESSION**  
**JUNIOR FOOTBALL**  
**THURSDAY 23RD FEBRUARY 2023**  
**4.45 FOR A 5 PM START**  
**AGES 9 TO 15**  
**LEETON SHOWGROUNDS**  
**NO COST**

Leeton-Whitton Football Netball Club  
are hosting a trial afternoon for all children  
wanting to play for the 2023 season.  
If your child is unsure of playing AFL this  
will be an ideal opportunity for them to  
enjoy what AFL and Leeton-Whitton Crows  
have to offer.

**TO REGISTER FOR THE 2023 SEASON**

<https://www.playhq.com/afl/register/90370a>

